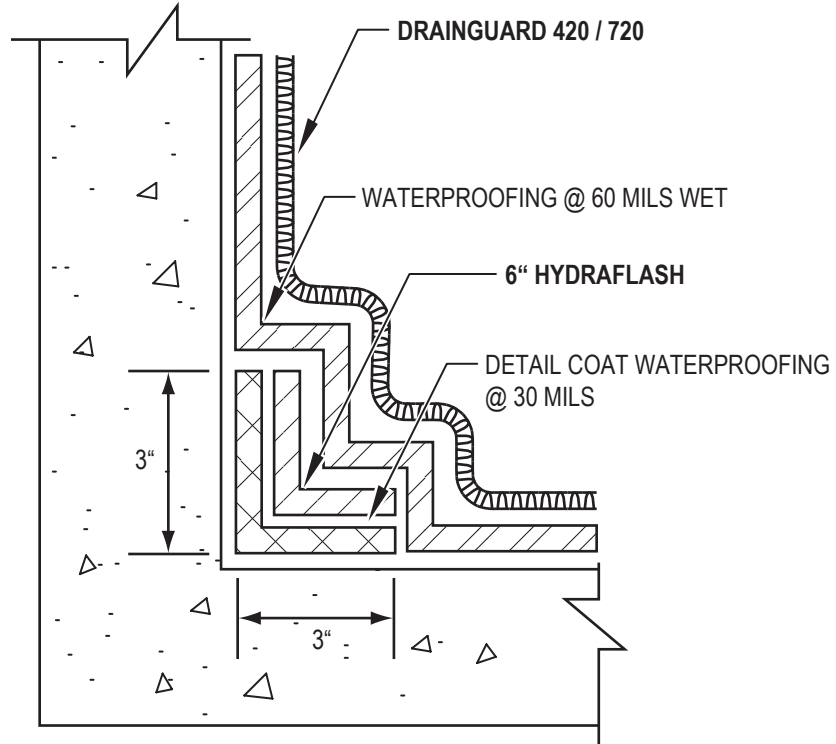


**HYDRA-GUARD / HYDRA-GUARD WB / J-COTE / J-COTE WB WATERPROOFING MEMBRANE  
PLANTERS**



- NOTES :**
1. APPLY DETAIL COAT WATERPROOFING @ 30 MILS.
  2. APPLY STRIP 6" HYDRAFLASH.
  3. APPLY WATERPROOFING @ 60 MILS WET.
  4. INSTALL **DRAINGUARD 420 / 720.**



P.O. Box 18476 | Fairfield, OH 45018  
(513) 939-3767 | Toll Free (877) 277-5948 | Fax (513) 939-3787  
www.appliedtechnologies.com

**SWP-7**