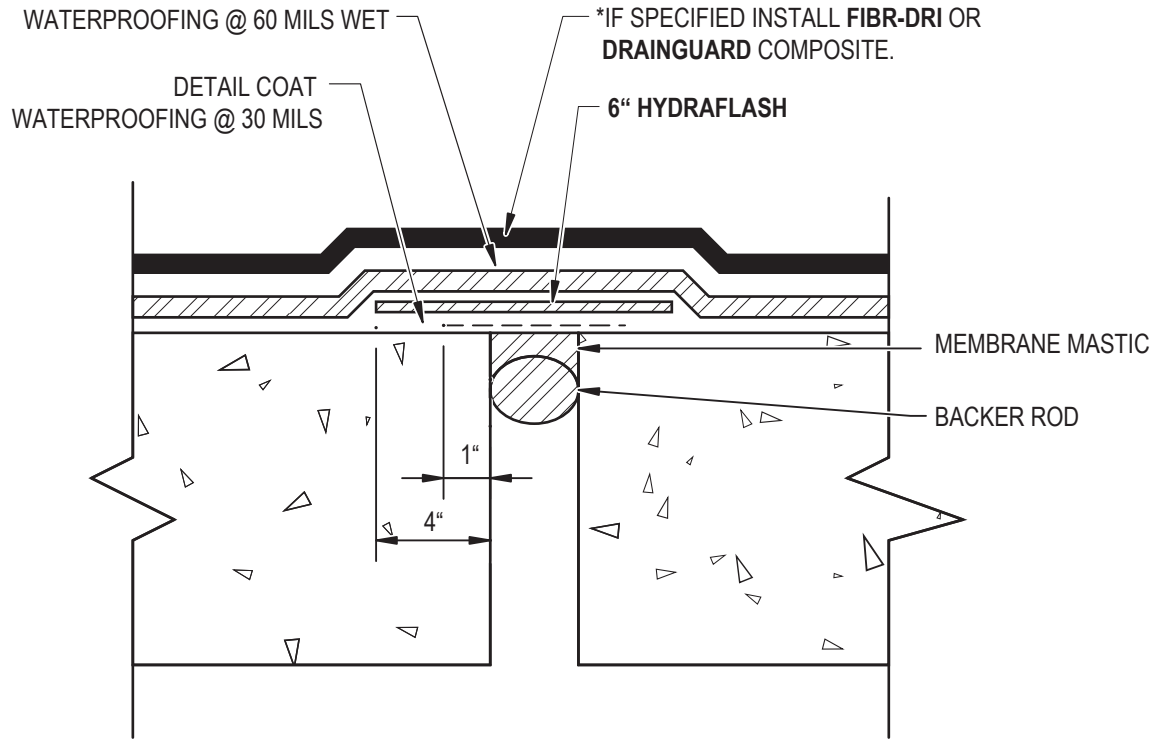


HYDRA-GUARD / HYDRA-GUARD WB / J-COTE / J-COTE WB WATERPROOFING MEMBRANE
 EXPANSION JOINTS LESS THAN 1/2"



- NOTES :**
1. INSTALL BACKER ROD. MEMBRANE MASTIC SHALL EQUAL 1/2 OF JOINT WIDTH.
 2. INSTALL MEMBRANE MASTIC FLUSH WITH SURFACE.
 3. APPLY DETAIL COAT OF WATERPROOFING @ 30 MILS THICK.
 4. APPLY **6" HYDRAFLASH**.
 5. APPLY WATERPROOFING MEMBRANE @ 60 MILS THICK WET.
 6. *IF SPECIFIED INSTALL **FIBR-DRI** OR **DRAINGUARD** COMPOSITE.



P.O. Box 18476 | Fairfield, OH 45018
 (513) 939-3767 | Toll Free (877) 277-5948 | Fax (513) 939-3787
 www.appliedtechnologies.com

SWP-3